

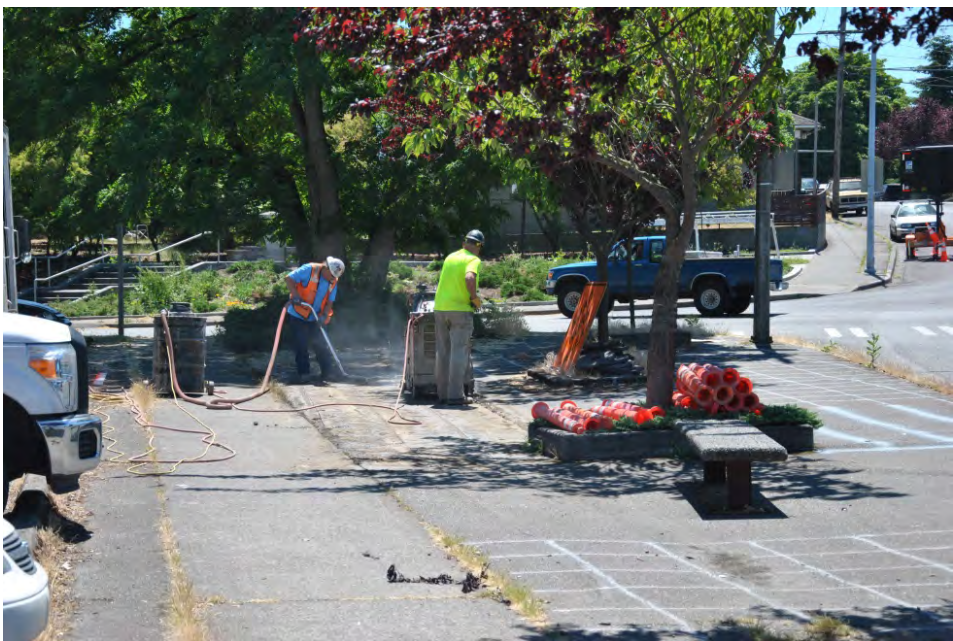
BRIEF DESCRIPTION:

DePave uses a grassroots approach to identify and remove unused impervious surfaces contributing to water impairment in the Puget Sound region. This McKinley Business District site was nominated by the Dometop Neighborhood Council, and the project was managed through the Pierce Conservation District.

Through two community events and donated services provided by local contractors, 7,000 square feet of pavement along McKinley Ave E was removed and planted with 2,800 shrubs and 30 trees.



35TH STREET BEFORE AND AFTER



DIVISION LANE

(BEFORE, DURING AND AFTER)





P
L
A
N
T
I
N
G
D
A
Y

McKINLEY AVENUE



McKinley Business District DePave

PROJECT MANAGER:

Melissa Buckingham, Pierce Conservation District

TEAM:

Pierce Conservation District
City of Tacoma Environmental Services Department
BNBuilders (Prime Contractor)
Rhino Construction (Sub Contractor)
Washington Conservation Corp
Community Volunteers

DESIGNER:

Michael Carey, Environmental Programs Group

BUDGET:

Grant funding provided by the Russell Family Foundation and the Make a Splash program paid for the permits and plants. Environmental Sponsorship provided by TAGRO and Solid Waste provided for the soil, mulch and waste disposal. Design services were provided by the City's Environmental Programs Group. BNBuilders managed the construction and donated time and equipment to remove 5,000 square feet of concrete and 23 failing trees, and amend 7,000 square feet of topsoil. The Washington Conservation Corp planted 30 trees. Two community events with approximately 100 volunteers removed 2,000 square feet of pavement and planted 2,800 plants.

Project Costs: \$22,000

Match Funds: \$62,000 (donated materials and services)

Total Estimated Costs: \$84,000

LESSONS LEARNED/CHALLENGES:

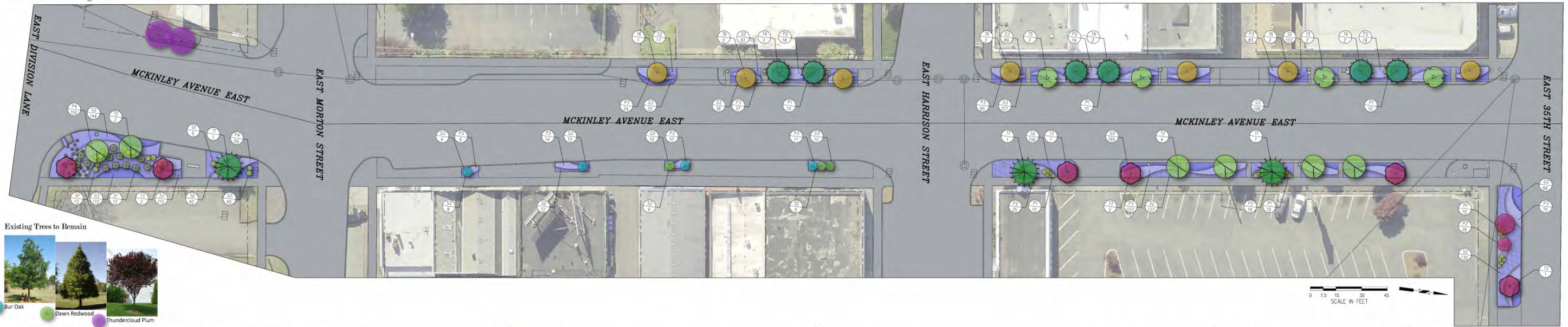
Community driven projects have the potential to make a significant impact on the community with minor input from City resources. More importantly, through active community engagement a sense of project ownership can be created, which can provide for a more sustainable resource for maintenance in the future.

VOLUNTEERS



McKinley Business District DePave

McKinley Business District DePave



Existing Trees to Remain



Large Trees



Small Trees



Shrubs



Grasses



Perennials



Groundcovers



Project Partners:

